

# Ex post analysis of irrigation development for future SIAs<sup>1</sup>

**Nick Taylor**

**Mike Mackay**

## **Introduction**

Social Impact Assessment (SIA) analyses the intended and unintended consequences of policies, plans, programmes and projects on people and communities. In these terms, SIA is a *predictive* endeavour, occurring *before* a policy, plan, programme or project is implemented. SIA also generates recommendations to mitigate anticipated (negative) effects in plans for monitoring and managing social change (Taylor et al. 2004; Vanclay 2015), generally referred to as impact assessment follow up (Morrison Saunders et al. 2007).

For empirically sound if-then propositions of social change and useful plans for social impact management, SIA's can draw on SIA follow up and comparative, ex post research. Ex post SIAs look back and evaluate the actual social effects of a policy, plan, programme or project and any management measures as experienced by affected communities. They help to build an understanding of broader elements of social change, i.e., what worked well, for whom, what patterns of change were not anticipated and how were these addressed, and what can be learnt from these experiences?

We have conducted ex post analyses of initiatives for regional social and economic regeneration in the Canterbury region's Waitaki catchment and Amuri basin (Figure 1). The research confirms that regeneration typically is a complex, incremental process involving multiple stakeholders over a lengthy period (Powe et al. 2015; Mackay, et al., 2018). The work is part of the "Thriving Regions" work stream in Aotearoa New Zealand's Building Better Homes Towns and Cities National Science Challenge: Ko ngā wā kāinga hei whakamāhorahora (Perkins et al., 2019). The first tranche of work examined the social impacts of tourism infrastructure developments. The focus on social impacts of irrigation developments is part of evaluating success of regional regeneration initiatives along with development of methods and capability in assessing social impacts. In this working paper we report preliminary findings of the irrigation analysis.

## **Social impacts of irrigation development**

From either a strategic or project perspective, irrigation development typically has objectives of economic regeneration and positive social impacts in the minds of planners and development communities. But the use of water resources and subsequent changes in land use can create social impacts with the potential to reduce or enhance outcomes for community wellbeing in affected areas, communities and regions. The search for enhanced social wellbeing is not simple. Abstraction of water for irrigation normally triggers an environmental impact assessment because of the impact on river flows and the impacts of new infrastructure such as dams, storage lakes and canals. These assessments should include SIA. But irrigation development also requires strategic SIA for planning land and water use in a catchment (Taylor and Mackay, 2016).

---

<sup>1</sup> Paper prepared for the 2021 International Association for Impact Assessment virtual conference. By Nick Taylor, Rangiora, New Zealand <n.taylor@tba.co.nz> and Mike Mackay, Agresearch, Lincoln Science Centre, New Zealand <Mike.MacKay@agresearch.co.nz>

Social changes with irrigation are best understood in relation to changes in land use and land ownership (Taylor, et al., 2003). Initial thinking by proponents of community irrigation projects, such as the Amuri and Lower Waitaki irrigation schemes, was to avoid the depressing effect of successive droughts on dry-land farming systems and rural communities. “You could see a mouse running” reported one Amuri farmer (Taylor, et al., 2018). Positive economic regeneration from irrigation with associated social benefits was expected for rural people and communities, but the extent of land use changes and subsequent social changes was not fully anticipated ex ante.

In summary, irrigation in the Amuri (Taylor et al., 2018) and Lower Waitaki (McCrostie Little, et al., 1998) brought changes in land ownership, land uses, farming systems and farm size. There was early evidence of phases of changes in farm ownership: from land conversions often associated with farm family succession to sales of land to new owners from outside the district, who then introduced new land uses and farming systems such as dairy farming (Taylor, et al. 2003).

Recent irrigation projects such as the North Otago Irrigation Company scheme, in which farmers jointly built infrastructure to take water from the Waitaki River, confirm that changes in land use now happen in just a few years post irrigation. In this scheme an increase in dairy farming was soon evident, along with an increase in dairy and beef production and a reduction in sheep numbers. Early adoption of new land uses was facilitated by farmers who had already converted parts of their farms through point sources of water (Agribusiness Group, 2010).

Accompanying new land uses were new methods to apply water: a shift from mainly border dyke (flood) irrigation systems to centre pivot and to other types of spray irrigation. These more efficient technologies resulted in re-distribution of water in catchments, particularly impacting down-stream farmers who previously extracted surface water boosted by increased run off from flood irrigation upstream. They also impacted amenity values and recreational users (Mackay and Taylor, 2020).

### **Impacts on employment and population**

Ex post analysis confirms irrigation causes a change in the type and number of jobs on and off farm, which in turn affects the size of the population. These changes are often significant in small rural communities previously experiencing a decline in population under dry-land farming systems. At the same time the composition of the population changes, with a younger age structure (Taylor, et al. 2003).

Changes in the size and composition of communities were identified in the Amuri (Taylor, et al., 2018), the Lower Waitaki (McCrostie Little, et al., 1998) and other parts of Canterbury (Mackay and Taylor, 2020). The key driver of these primary social effects is the change of land use to dairy farming and some horticulture. The analysis of these assessments shows marked increases in the number of dairy farmers and farm workers in the farmer and farm worker occupation group over the main periods of land use change.

The more intensive land uses attract younger, more mobile workers including farm workers, share milkers, contract managers and their families. The cohort effect in these younger, incoming populations is reduced by the ongoing movement of younger farmers and farm families into dairy areas due to the demand for contract milkers and farm workers (Taylor et al., 2018). While some of these newcomers stay in farming, build their asset base and progress towards higher levels of farm ownership, they will in turn hire younger workers and contractors.

Intensive farm operations also bring an underlying change in the social structure of farming with a marked increase in the number and proportion of paid employees and a reduction in self-employed farmers. These changes are associated with the increasing size of irrigated land holdings and scale of production with irrigation and over time – indicated by the average herd size. For instance, in the Amuri irrigation area the average herd size was 832 cows, double the national average of 414 (Taylor et al., 2016). This type of intensive farming, with its corporate farming systems, is indicative of a super productivist landscape (Mackay and Perkins, 2019).

Intensification of farming in these landscapes was also found to bring higher qualifications and technical skill levels amongst farmers and farm workers and associated communities. Relevant qualifications and ongoing learning are necessary for large, high-tech farms and corporate-structured operations, and many farm operators have utilised migrant workers to fill the skills gap that they have faced with the expansion of intensive farming (Mackay and Taylor, 2020).

In addition to the changes brought by irrigation, the research also found an underlying trend of structural ageing in many rural areas and communities, such as the Waitaki, due to their attractiveness for retirement, including the presence of amenity migrants. This puts an onus on environmental policy and management to ensure intensive farming does not reduce amenity values and adds to rather than reduces outdoor recreational opportunities such as freshwater angling (Mackay and Perkins, 2019).

Overall, an increased population in rural areas and small settlements was found to bring significant benefit to community wellbeing, through the effect of increased school rolls, better supported health services, organised sports, and a range of community organisations and facilities that all require sufficient numbers of people for funding purposes and to build social capital (Mackay and Taylor, 2020).

### **Impacts on diversity and social cohesion**

Irrigated areas are increasingly diverse and dynamic socially with incoming farmers, migrant workers and their families (Rawlinson, 2011; Mackay and Taylor, 2020). The Amuri assessment confirmed these findings (Taylor et al., 2018) as does our research in the Waitaki area. A significant increase in the number of migrant workers in agricultural production and processing has flow-on effects on services such as local schools, social capital and community resilience. Challenges emerged in the early years of land use change when a combination of long-standing residents and newcomers with new skills and ideas shaped and reshaped affected areas through investment of social and financial capital, business acumen, organisational prowess and new volunteers (Mackay, et al., 2018). It was revealing that migrants are largely a positive experience not just for their labour but for the way they have integrated positively into communities. This positive outcome may be because farmer employers benefited from the lessons of early negative experiences with cultural differences, as well as from subsequent programmes to support positive employer-employee relations and newcomer migrants settling into an area.

### **Impacts on environmental quality, recreation and amenity values**

Irrigation has transformed landscapes with shelter, other trees and hedges removed to facilitate centre pivots, bringing what a local newspaper described as “alien” landscapes and public concern about loss of visual amenity, more uniform landscapes, physical changes in water ways and old drainage systems, and increased on and off-farm water storage areas – some of which are now used

for recreation purposes (Mackay and Perkins, 2019). Non-point discharges of nutrients into water from intensive farming have reduced water quantity and quality, and subsequently ecological, cultural and amenity values in lowland streams, coastal lakes and lagoons. The research recognises negative effects on the socio-cultural values of freshwater bodies, cultural uses by Māori and outdoor recreation by a range of people including farmers themselves (Mackay and Taylor, 2020).

### **Impacts on health**

The impacts of reduced water quality on human health are a concern in catchments affected by intensive farming. Domestic drinking water wells in rural Canterbury are relatively shallow and there is an increase in the level of Nitrates in wells close to areas of intensive farming. A report by the Canterbury District Health Board notes a direct potential effect on human health (Green, 2014). In addition, low quality of surface water affects the health of humans and their pets engaged in water-based recreation through the presence of cyanobacteria. Plus reduced quality and quantity of surface water and associated amenity reduces the level of healthy, active, outdoor recreation (Mackay and Taylor, 2020).

### **The management of change**

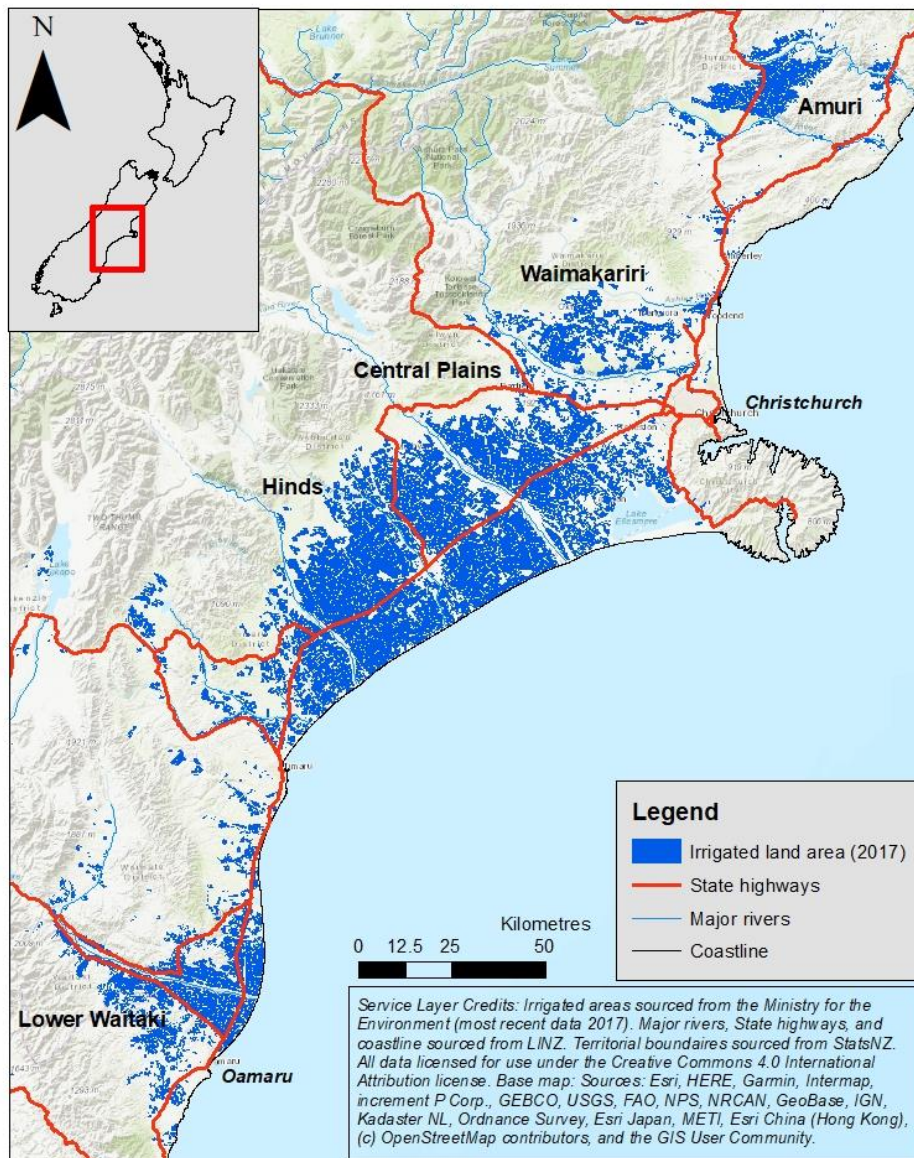
Given the extent of social changes found by ex post SIAs of irrigation, it is notable the changes were largely *unanticipated* in project planning. As a result there is little in past impact assessments about proactive management of social change. Ad hoc initiatives focus on integration of newcomers, including migrant workers, into communities. Solutions to social issues such as finding housing for workers are largely left to individual businesses and contractors (Taylor, et al., 2018).

Another aspect is the move towards collective environmental management, as issues arise from water abstraction and nutrient discharges, affecting cultural uses, outdoor recreation and drinking water. Farmers have adopted collective, farmer-driven approaches to forming farm environment plans and an adaptive approach to environmental management, recognising the importance of social licence if future developments are to proceed in an increasingly contested arena. But rural communities seeking to balance economic, social and environmental outcomes, require capacity to monitor and document social impacts and consequences for social wellbeing. In this respect, the research programme is currently preparing guidelines on SIA in rural communities.

### **Conclusion**

Irrigation development is an important way that rural communities can drive economic regeneration but it also creates a complex set of positive and negative social impacts. Their assessment and management has implications for net social wellbeing over time. The social licence for large-scale irrigation development requires commitment to strategic and project-level SIA. The effective practice of SIAs for irrigation, water planning and management is clearly assisted by the availability of comparative, ex-post analysis.

**Figure 1: Irrigation areas in the Canterbury Region**



## References

- Agribusiness Group (2010). North Otago Irrigation Company: The Economic Benefit to the Community. Report prepared for the Waitaki Development Board.
- Green, J. (2014). Public health implications of land use change and agricultural Intensification with respect to the Canterbury Plains. A Literature Review. Canterbury, District Health Board.
- Mackay, M. and Perkins, H. C. (2019). Making space for community in super-productivist rural settings. *Journal of Rural Studies*, 68:1-12.
- Mackay, M. and Taylor, C. N. (2020). Understanding the Social Impacts of Freshwater Reform: A Review of Six Limit Setting Social Impact Assessments. AgResearch Report RE450/2020/005 for New Zealand Ministry for the Environment, AgResearch Lincoln Research Centre, Christchurch, New Zealand.

Mackay, M., Taylor, N. and Perkins, H. (2018). Planning for Regeneration in the town of Oamaru. *Lincoln Planning Review*, 9(1-2), pp.20-32.

McCrostie Little, H., Taylor, N. and McClintock W. (1998). Resource community formation and change: a case study of Waitaki Plains. Working Paper 14, Taylor Baines and Associates, Christchurch.

Morrison-Saunders A., Marshall, R. and Arts, J. (2007). EIA Follow-Up International Best Practice Principles. Special Publication Series No. 6. Fargo, USA: International Association for Impact Assessment. (updated 2021).

Perkins, H. C., Mackay, M., Levy, D., Campbell, M., Taylor, N., Hills, R. and Johnston, K. (2019). Revealing regional regeneration projects in three small towns in Aotearoa—New Zealand. *New Zealand Geographer*, 75(3), pp. 140-151.

Powe, N., Pringle, R., & Hart, T. (2015). Matching the process to the challenge within small town regeneration. *Town Planning Review*, 86(2), pp.177-202.

Rawlinson, P. J. (2011). The influence of the black and white tide: Dairy farming, landscape and community change. Master of Social Science Thesis, Lincoln University.

Taylor, N., McClintock, W. and McCrostie Little, H. (2003). Assessing the social impacts of irrigation - a framework based on New Zealand cases. Paper presented to the International Association for Impact Assessment Annual Meeting, Marrakech, Morocco, 17-20 June.

Taylor, N., Bryan, H. and Goodrich, C. (2004). *Social Assessment: Theory, Process and Techniques* (Third Edition). USA: Social Ecology Press.

Taylor, C. N. and Mackay, M. (2016). Practice issues for integrating strategic social assessment into the setting of environmental limits: insights from Canterbury, New Zealand. *Impact Assessment and Project Appraisal*, 34(2), pp. 110-116.

Taylor, N., Mackay M. and Wilson, J. (2018). Amuri Irrigation Social Assessment. Report to Amuri Irrigation Ltd, Nick Taylor and Associates, Christchurch.

Vanclay, F., Esteves, A. M. and Franks, D. M. (2015). *Social Impact Assessment: Guidance for Assessing and Managing the Social Impacts of Projects*. USA: International Association for Impact Assessment.